



CONTENTS

ABOUT US

02

OUR JOURNEY

04

PROJECTS

05

OUR TEAM

15

SERVICES

19

CONCEPTS

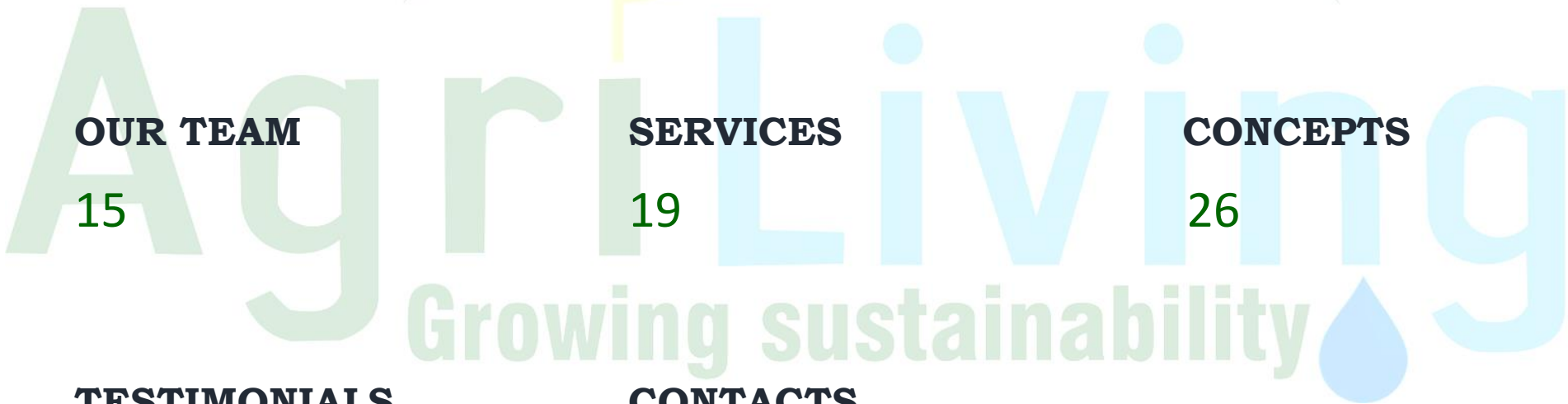
26

TESTIMONIALS

30

CONTACTS

31



ABOUT US

AgriLiving is a group of professionals with hands-on practical project experience, expertise and knowledge of integrated & innovative agriculture, circular economy and sustainable living habitats.

AgriLiving models promote collaboration and inclusiveness.

These are derived from 40+ years of hard practical experience in Africa working with farmers overcoming challenges in different soil conditions, climatic changes, value addition, processing, marketing and distribution.

Our operational expertise, vertical integration, and global positioning allows us to develop people-centered projects with deliberate integration of food sovereignty and environmental stewardship (soil, water, biodiversity conservation, carbon sequestration, etc.)

In all our projects, we try to deepen our understanding of comparative agricultural challenges, and engage with farmers and other stakeholders while connecting food systems to conservation, improve resilience and sustainability through practical regenerative interventions hence uplifting the social and ecological values of agro-ecosystems.



Shared value strategies



Tried & tested business models



Proven sustainable community development



Innovation in cultivation



Decades of hands-on experience



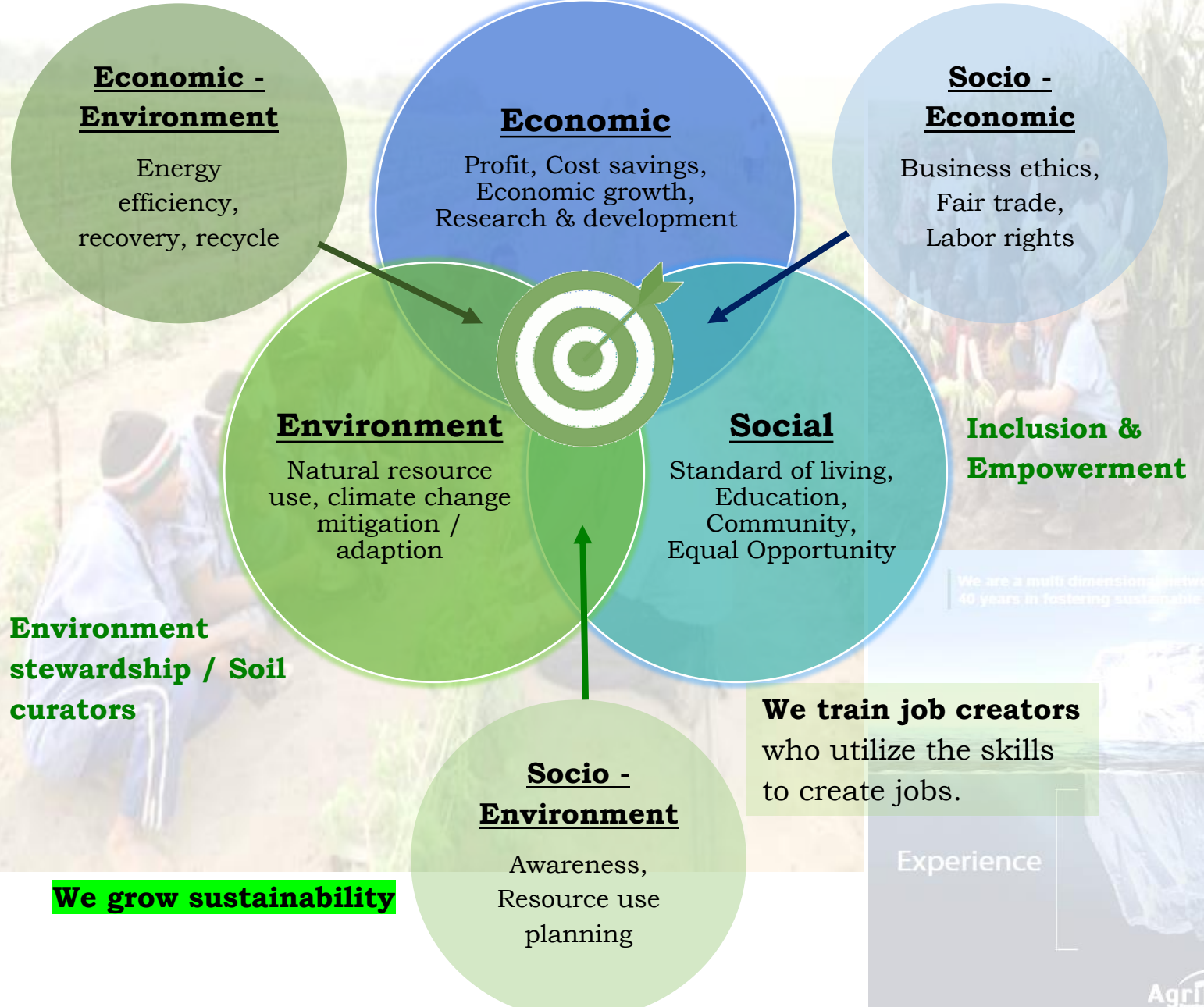
Our team of international industry experts

AgriLiving provides a broad range of agriculture related concepts and project implementation services, using cutting edge technology to offer best in class sustainable solutions for Africa. **Our concepts are economically impressive, ecologically favorable and socially responsible.**



To provide a roadmap to expand economic opportunity through creation of sustainable and innovative agriculture based solutions while creating a positive impact on the environment and communities.

Astute approach



Environment stewardship / Soil curators

We train job creators who utilize the skills to create jobs.

We grow sustainability

VALUES

- A**TTAINABLE
- G**LOBAL IMPACT
- R**ELEVANT
- I**NNOVATION
- L**EADERSHIP
- I**NIITIATIVE
- V**ISION
- I**NCLUSIVE
- N**NATURE FRIENDLY
- G**OVERNANCE

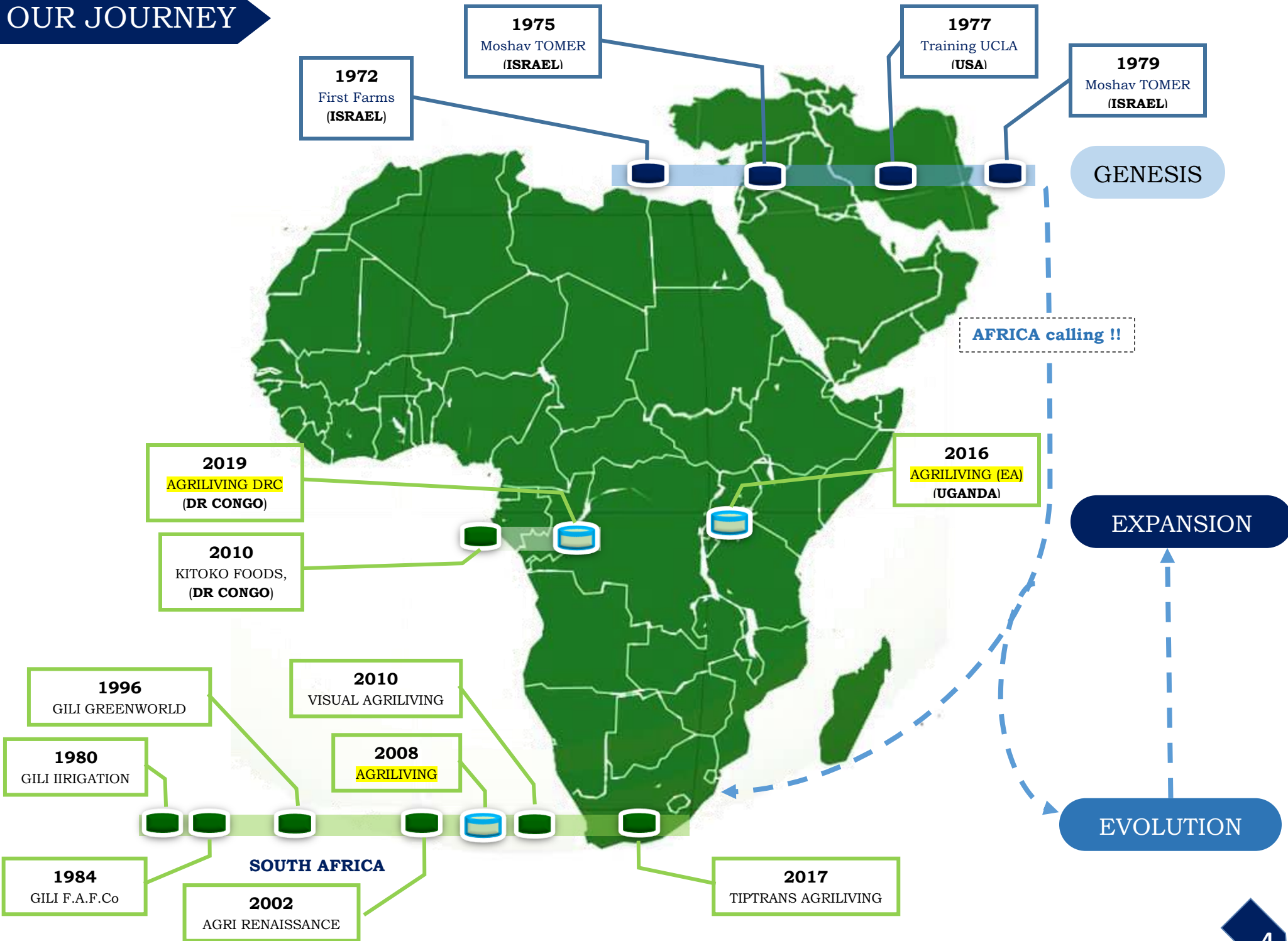
We are a multi dimensional network of professionals with a track record of over 40 years in fostering sustainable Agriliving solutions.

Execution

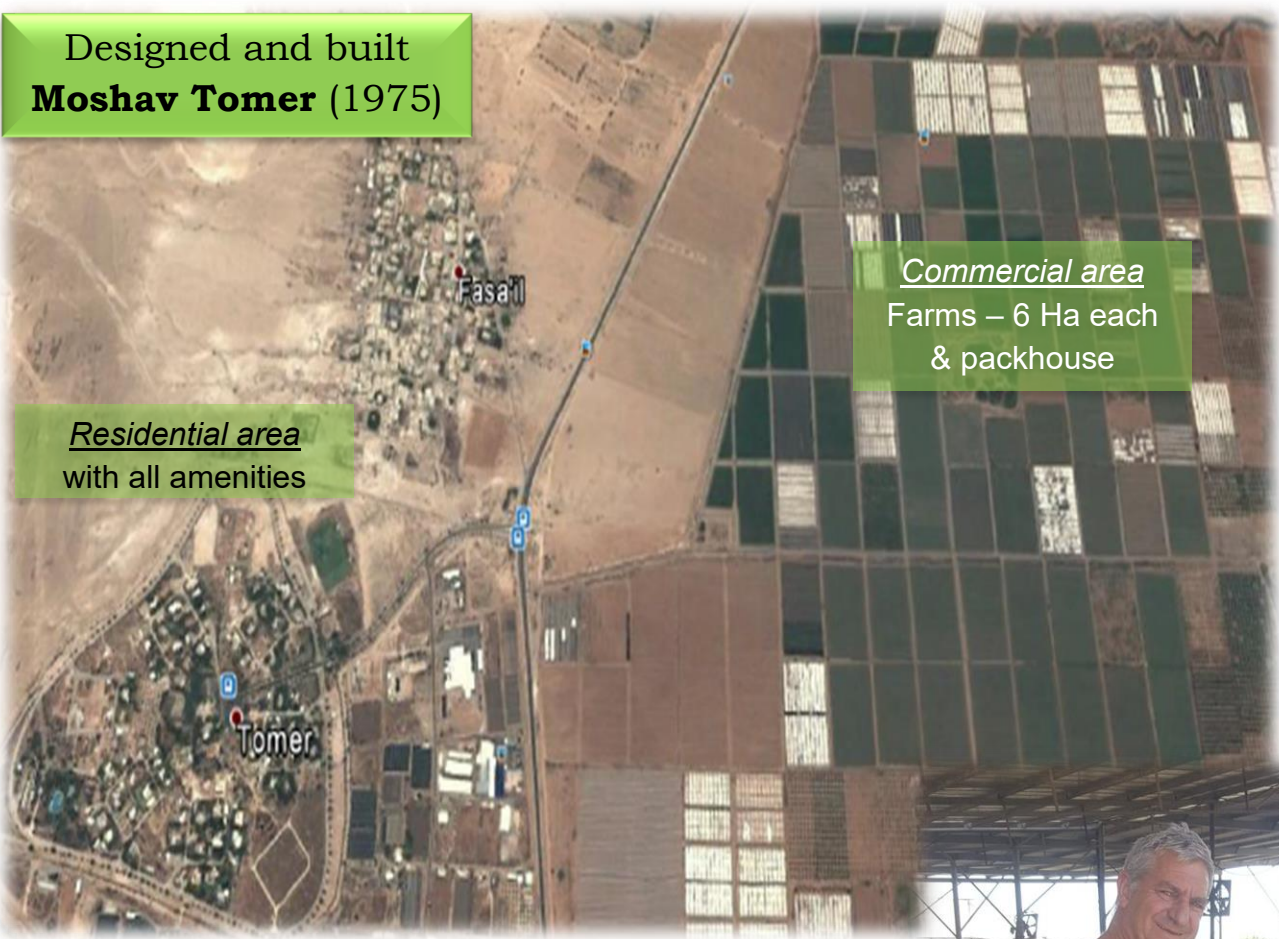
- Irrigation
- Mining
- Construction
- Agroforestry
- Horticulture
- Aquaculture
- Civil Infrastructure
- Renewable Energy

Experience

OUR JOURNEY



Designed and built
Moshav Tomer (1975)



Residential area
with all amenities

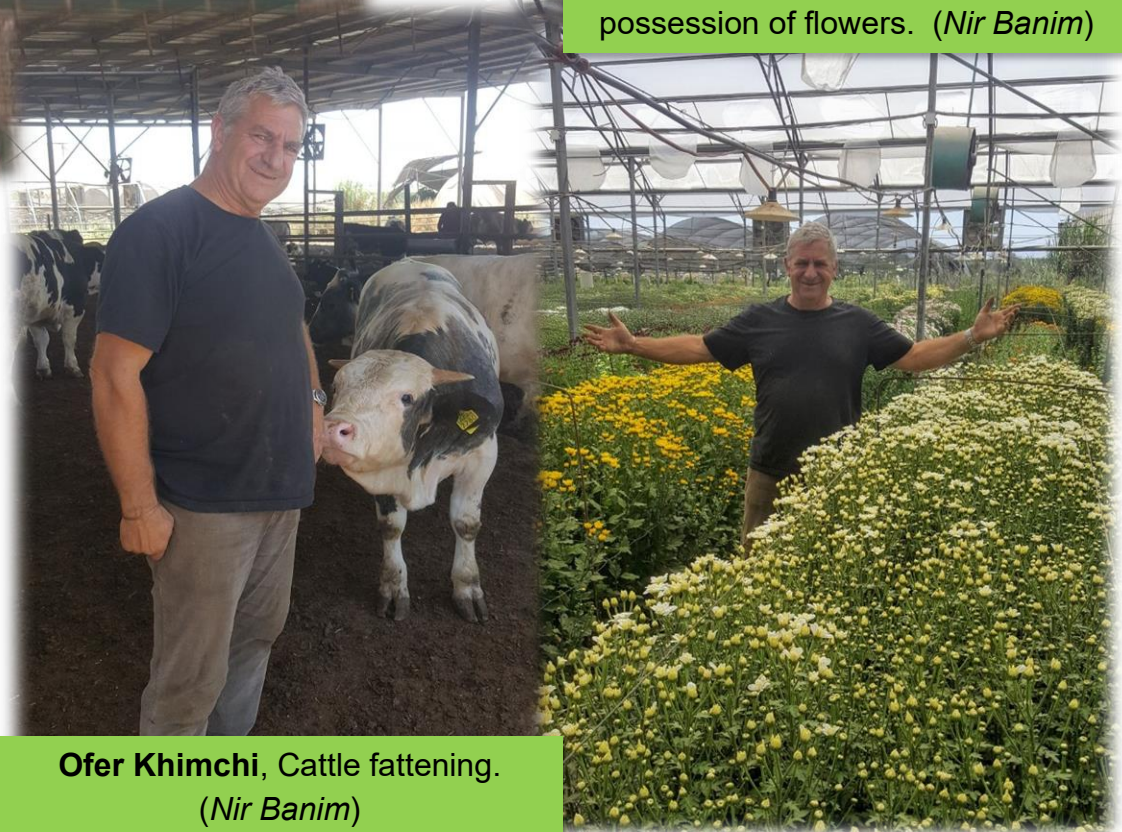
Commercial area
Farms – 6 Ha each
& packhouse

PROJECTS

Erez Kedem, growing Mangoes since 1975.
(*AlMagor and Moshav Ma'ale Gamla*)



Ofer Khimchi, with prized possession of flowers. (*Nir Banim*)

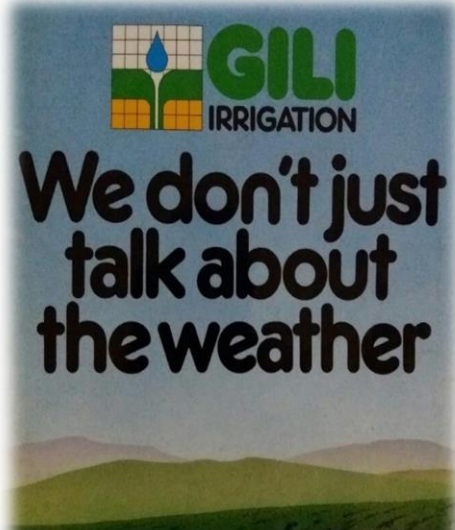


Hemi Barkan (1975) King of Peppers,
Moshav Paran (Arava valley)



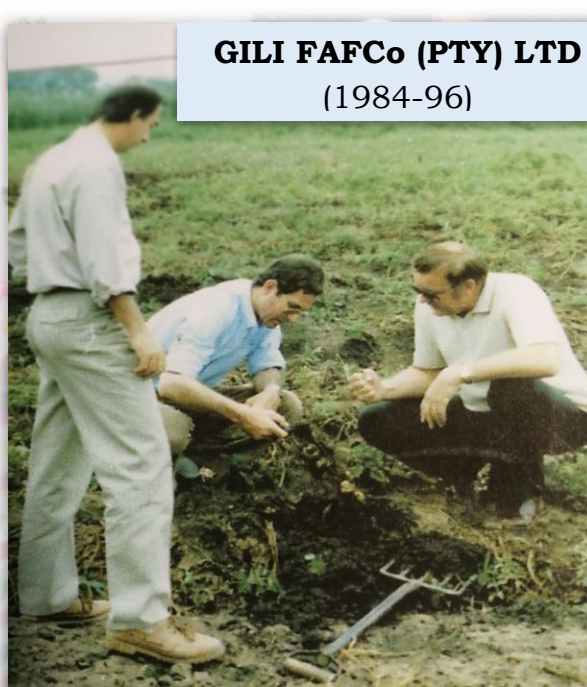
Ofer Khimchi, Cattle fattening.
(*Nir Banim*)

PROJECTS



GILI IRRIGATION
(1980-97)

GILI FAFCO (PTY) LTD
(1984-96)



1984 – Simon Susman (Director – Foods at Woolworths SA) visits *Gili FAFCO. Farm* to understand the soil enrichment program to get excellent quality produce with high yields.

Variety enjoying success for 36 years



1984

2020

Round, firm, 7 days shelf life



Maize cobs (milies) grown under drip irrigation. *Big cobs earlier than usual season was a big attraction.*



Promoting the Gili Berries in the EU Trade Fair.

Gili Greenworld – Ariel view



PROJECTS



GILI GREENWORLD
(1996 – 2006)

PNP CEO (2000), learning on the farm on why it is good.



AGRI RENAISSANCE
specialized in producing CRISP LETTUCE HEADS in Hydroponic systems.

AGRI RENAISSANCE
(2002 – 2008)

PROJECTS



GILI KIBBUTZSA Projects DELFT HOUSING and LONMIN TRUST.



...opportunities for communities

Working groups have identified a number of projects within the specific areas and significant progress has been achieved over the last six months since the working groups were initiated. Highlights include the introduction of first aid training classes for 52 members of the GLC, Eco-schools Programme at the GLC schools, mathematics and science winter schools for grade 7 learners, workshops to facilitate initial local community suppliers registering as vendors on the Lonmin Platinum vendor list and the launch of a community-based newspaper, the GLC Voice. More information on these initiatives are available on the website lonmin.com.

Development
In partnership with The Employment Trust of Africa (TERA) we committed over a three-year period (2005) to further develop initiatives in countries outside the region where Lonmin historically employed employees. Through GPS technology, employees residing in these areas were given a remote chance to activate once they arrived at home. This assisted in identifying the specific communities and their needs and revealed that the predominant needs were water supply, sanitation, hygiene, education, infrastructure and agricultural development. Numerous initiatives were launched in partnership with national, provincial and local government, community organisations and industry partners. Classroom blocks were built at six schools and fitted with water supply and sanitation. Water supply and sanitation projects at schools in Lesotho and Mozambique affected approximately 10,000 people, while agriculture projects provided support to 3,000 farmers in the Eastern Cape, 3,000 in Lesotho and 500 in Mozambique.

CASE STUDY

Gill Lonmin Kibbutz Company

The Gill Lonmin Kibbutz Company is a commercial agribusiness initiative that commenced in October 2004 and provides an integrated solution to BEE, job creation and skills development.

The project entails a sustainable highly technological agricultural business that is located close to the Wonderkop Community and complies with the requirements of the British Retail Consortium.

An investment of \$5 million was committed over a three-year period, and the first crops were harvested in June 2005. Dedicated local and export market contracts have been secured for all products. Currently the project employs 106 GLC members and Historically Disadvantaged Employees will receive a 40% share in the business after a two-year period. It is envisaged that an estimated 1200 jobs will be created by 2009.



RHODES DAIRY FARM

An associate of AgriLiving for 15 years.



PRODUCE AT SPAR STORES, RSA.



VOLKSWAGEN CSR PROJECT

Growing hot peppers.

PROJECTS



KALAHARI KIDS

One of best turnkey projects, designed and built for Northern Province, at request of Premiere **Hon. Mane De Pitcio** in 2002,

Total Investment: \$10m

The Kalahari Kid Corporation is dedicated to producing only superior quality goat and lamb products for both the local and international markets. It is a joint initiative between commercial promoters, the Northern Cape Provincial Government and emerging farmers in the Northern Cape. Its aim is to create sustainable jobs and improve the income of emerging farmers throughout South Africa. We will achieve this through the delivery of quality products and training and superior advisory and support services to Kalahari Kid Farmers.



Processed Meat



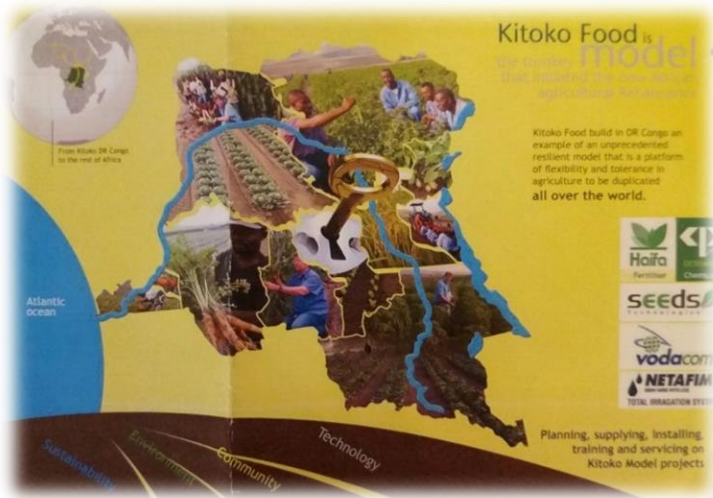
Specialty: Live Goat exports



In the short-term allows: Identification of interested and committed farmers; Forming of Co-operatives; Contractual relationship with a legal entity; Trust and relationship building with markets; Non-commercialized farmers to achieve economies of scale by producing together, sharing costs, and having greater bargaining power.

In the long-term creates: Growth into active shareholders of the company; Educated, informed and confident Commercial farmers

Still running successfully under the able management of Ms. Judith Wiedermann (co-founder with Mr. Gil Arbel)



KITOKO FOODS, DRC
 A modern commercial farm
Total Investment: \$10m

President of DR Congo, HE Joseph Kabila taking keen interest in the project, asked all provincial governors to visit the farm.



Sustainability



All provincial governors visited the farm to understand the technology.

Kitoko Food Model don't remove small holders farm, we empower and sustain them

Total irrigation and sprinkler with the biggest and the best netafim, irrigation and fertigation system



We treat and feed plant like mother feeds her baby



70, av. Batetela,
 euble Tilapia, 5^{ème} étage
 Kinshasa-Gombe
 Site d'exploitation
 Village Masaba 1,
 Quartier Menkao
 Kinshsa-Maluku
 Contact :
 Tél. +243 81 526 2991
 +243 97 600 5320
 e-mail : info@kitoko-food.com
 www.kitoko-food.com

PROJECTS

FROM SMALL SCALE TO SMART SCALE (2018 – 2020)

Converting PINEHAVEN AGRICULTURE TRADING (a family enterprise practicing subsistence agriculture) to smart scale farming enterprise with irrigation and packhouse facilities.



Clearing land & planting preparation



Training

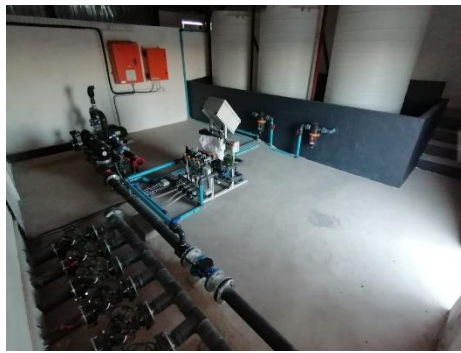


Eskom electricity connection



Installing Drip Irrigation

It started as a mere experiment / pilot study for implementation of the smart holder program by TIP TRANS AGRILIVING, but within 6-8 months – it got interest of **SAB / ABInBEV** and were awarded a PIC GRANT and extended PRODUCTION LOAN to install the Irrigation Infrastructure for the whole 5 Ha to avoid climate change effects and Packhouse (Global G.A.P level) to add value to the produce of the farm.



Reservoir with a capacity of 400,000 liters to carry the farm through the dry season when it is full.
The irrigation infrastructure – pump house, fertigation tanks, drip lines for the 6 ha farming area.

The farm is now ready to grow blueberries & high value horticulture crops using hi-tech and sustainable agricultural practices.
From Small to SMART Scale BEE – 5 HA BLUEBERRY
(1 Mn Rand profit per ha per year; 150 new jobs)



Packhouse with cold room facility.



One of the first AgriLiving projects under the “**AGRIBERRY**” franchise program for commercial cultivation of Blueberries with guaranteed market both exports and domestic.

It will also be a first 100% women owned business where AgriLiving will provide the management assistance. The model has been approved and welcomed by local financial institutions.

We expect the project to be funded by October 2020, and we shall be on site from November 2020.

For AgriLiving, the two factors were paramount while planning – **INTEGRATION** & **SUSTAINABILITY**.

Both have dimensions which are relevant to planning and development. These overarching goals of the concept can be achieved by applying planning principles that promote and reflect the different dimensions of sustainability and integration.

It is a **sustainable ecological community living** It is based on the opportunity to provide solutions to the municipalities concerning their existing challenges in all their priority focus areas in spatial planning.

The model is based on the components and strategies of a social circular economy, sustainable agriculture, green development, community interaction and interdependence, community profit sharing, bio-based economy with sustainability & job creation as the key guiding principles.

We are seeing an increasing acceptance and trend of social impact projects based on sustainable livelihoods worldwide and in South Africa, especially after the economic meltdown due to the pandemic.

PROJECT PIPELINE - AFRICA



Intensive and commercial goat farming in a sustainable manner to benefit the local farmers, community and create thousands of jobs with a target of establishing a capacity of 10,000 breeder goats within the franchise.

The end-to-end value chain model is being established in UGANDA with a local entrepreneur starting with the "GOAT PARK" which will host 500 breeder goats, feedlot facility for 800 goats, training and demonstration facilities, multi-agricultural enterprises to ensure food security (for both farmers and livestock) as well as sustainable income.

The project is expected to start in November 2020, and the demo farm with goats will be ready for inauguration by MAY 2020.

In 2020, we have seen an **exponential increase** in interest from project promoters in DR CONGO for varied projects from training, forestry, livestock, food security, commercial agriculture to ecovillage.



FONDS FORESTIER NATIONAL

Development of sustainable agroforestry model near Kinshasa along with training module in schools to sensitize the children on new climate smart agriculture and nature-based farming technologies.



CITY OF DAVID PROPERTY MANAGEMENT CO.

Development of AgriLiving ecovillage concepts for 4-5 probable sites in DR CONGO in various provinces with all its components from sustainable livelihoods to self-sustaining community settlements based on agriculture-based enterprises.

LESOTHO

AgriLiving has started engagement process with LNDC, to develop 1,000 to 1,500 hectares SUSTAINABLE AGRILIVING PROJECTS along with communities with main enterprises being Cherry, blueberries and goats.

This is also end-to-end value chain model working with communities and channel partners.



We are a multi-dimensional network of professionals with individual experience of over 40 years' in fostering sustainable AgriLiving solutions. The team has cumulative experience of over 200 years which helps in delivering innovative solutions in challenging conditions to achieve success in each and every project.



Gil Arbel
Founder

A passionate farmer who specializes in conceptualizing, designing, installing, managing, processing, value addition and marketing.



Ofer Khimchi
Member

A soil curator who specializes in farm planning, soil amendments, fertigation, yield optimization. He is also expert at feed management for livestock.



Erez Kadam
Member

Mango king, who specializes in nursery management, plant varieties, growing media, plantations especially - MANGO.



Krishna Murty
Founder

A serial agriprenuer, who specializes in financial modelling, management systems, mergers and acquisitions, JV, sustainability, planning and resource management.



Dr. Itzhak Knafo
Member

A lover of challenges who specializes in project management, farm design, farm planning and implementation. He is expert at setting up farms in trying conditions.



Hemi Barkan
Member

King of peppers, who is Director of Arava regional agricultural committee responsible for the intensive and commercial farming of peppers in the higher Arava region.

AGRILIVING OFFICES



UGANDA

The Pearl of Africa.

Situated along the equator the country offers a suitable climate for tropical agriculture. It has land, climate, water, people and government policies in sync with our organization broad goals for the nation.



Samuel G.L.
Balagadde
Member

Food technologist, who specializes in quality management systems, value addition, processing. Product development.

He has worked with many international development agencies in various roles including - *country director (Uganda) – UNIDO, Consultant to Ministry of Agriculture on Food safety systems and quality audits. etc.*

Ongoing projects:

Developed a concept of 800 Ha in Uganda – commercially grown Mango using sustainable agricultural practices. 80% of the produce will be processed into Dried Mango products (without preservatives) like dried strips, rolls, fruit leather for exports. **Large number of jobs, higher income.**



DR CONGO

Rich with all resources.

The country is blessed with a lot of natural resources. We see DR Congo's biggest resource is the equatorial forests which are the lungs for the World after Amazon.



David Odia
Member

A Solution oriented personality and individual with both a strong blend of technology, business, investment acumen resulting in consistent development of powerful business strategies supported by cost effective and high performance.

David is also the President of *Absolor Investissment S.A.S* with focus on supply chain ecosystem.

Ongoing projects:

- 1] Sustainable Agroforestry** project with **FONDS FORESTIER NATIONAL**, a contract has been signed.
- 2] Agri-cluster or Eco-village model** in Lubumbashi province near the border of Zambia.

AFFILIATES & ASSOCIATES

Global leader in precision irrigation solutions for sustainable agriculture.
Associate for last 45 years.



Leader in environmental remediation and agricultural bio-technology.

Established in 1998 in South Africa, DOLE is a leading exporter and producer of fresh fruit with an iconic brand name. Their main focus in the early years was to act as a marketing agent for a select group of hand-picked growers. Today they are supporting AgriLiving and the farms under its management under "AGRIBERRY" program.



WOOLWORTHS
the difference



Leading retailers' in South Africa with network across Africa. Association spanning decades.

International distributors and retailers with worldwide procurement.
The association since 1978.



MARKS &
SPENCER
LONDON



Promont Switzerland AG is an Agri-business with two subsidiaries in **Côte d'Ivoire**: A cocoa plant in Duékoué (completed) and a Tomato paste and manioc starch production plant in Kotobo (under construction).

AFFILIATES & ASSOCIATES

STAG

STAG AFRICAN
STUDENT ACCOMMODATION GROUP

A world-class property development, design, construction and management company that operates out of Cape Town, South Africa, and has a national footprint. While they have many years' experience in all aspects of property development and construction, their particular area of expertise is the customized design, construction, and operation of cost- and time-effective student accommodation alternatives.

An innovative business focused on the design, construction, financing and management of world-class student accommodation

Visual is a property development company with its head office in the northern suburbs of Cape Town. Visual focuses on all aspects of property development and is proud to have been involved with numerous successful residential, commercial and retail projects.

VISUAL
property developers



C-T-P CONSULTING ENGINEERS

CONSULTING STRUCTURAL / CIVIL ENGINEERS & PROJECT MANAGERS

Areas of specialization in water and wastewater include bulk water mains, outfall sewers, water and sewage and irrigation pump stations, rising mains, water and wastewater treatment works, water storage reservoirs.

Specialises in the supply and delivery of aggregates such as coal, ore, sand, stone, maize, lime and compost. They have a large fleet is used for specialised transport and construction services, ranging from 3 to 37-tonnes.



A dynamic and flexible company, with a forward-looking vision able to operate and execute a tailor-made cannabis strategy, to penetrate the rapidly growing international and African cannabis industry.

We offer services throughout the life-cycle of the project:

- **Building and implementing complete turnkey agriculture based projects.**
 - Range from strategy and policy development to tailored solutions.
 - Explore the needs and challenges.
 - Understand the factors, demographics, resources and develop a suitable concept.
 - Conduct feasibility studies and develop a business plan.
 - Develop a fundable project model.
- **Operations and management**
 - EPC/EPCM contracting
 - Professional on-site and off-site project management services
 - Installation supervision.
 - Organize and moderate project implementation.
 - Develop the work plan, employee policy, quality policy, certifications.
- **Support through the value chain.**
 - Package, process and develop the finished product.
 - Promote and market the products.
 - Continuous innovation and training to achieve efficiency and improve in all aspects.
- **Extension and training services.**
 - Transfer of skills and capacity building.
 - Software for tracking, training, and built-in incentives to manage manpower.
 - Certification and traceability programs.
 - Recruitment of proper management and training.
- **Innovation, research and development**
 - Variety improvement and selection.
 - Innovation and provision of solutions to challenging situations.

MANGO

Mango – the king of fruits.

Among all fruits, mango still stands out because of the yield, employment opportunities, product range, cluster farming and profitability.



Developed a concept of 800 Ha in Uganda – commercially grown Mango using sustainable agricultural practices. 80% of the produce will be processed into Dried Mango products (without preservatives) like dried strips, rolls, fruit leather for exports. **Large number of jobs, higher income.**

BLUEBERRIES

The healthiest berry with demand.

Being rich in antioxidants and thus marketed as a “super fruit”, these soft-skinned fruits are highly rewarding in terms of income, jobs and export revenue.



Large number of jobs, higher income.

COCOA

Product of Africa.

While 80% of the raw material is grown and exported from Africa, its share in the multi-billion industry is only in single figure. We encourage processing and exporting of value added to retain maximum revenue in Africa.



Large number of jobs, higher income only from value addition and processing.

MACADAMIA

Driving people nuts.

High demand with least amount of area planted in comparison the current demand. Multiple uses as raw, roasted, caramelized, confectionery, oil, etc. will keep the demand high for this nut.



Large number of jobs, good income.

CATTLE

Dairy and Beef.

Whether it is grain fed, grass finished or intensive grazing – we have got it all covered. Maximizing feed to weight gain or milk yield ratio.



GOATS

Healthy red meat.

Excellent enterprise for smallholders. The enterprise is profitable when you get at least 3 kids every 8 months with quality feed and growing conditions.



Live Goat exports to Middle east and rest of Africa.

POULTRY**Chicken for eggs and meat.**

Feed management – the correct type and qty for the particular growth stage. Free grazing chicken is most popular with us.



Maximizing the chicken enterprise using free range like above picture, it helps fertilize the soils for better growth of grass and plants for feed. ***Integrated farming.***

AQUACULTURE**Tilapia or Trout.**

Tilapia is the most favored fresh water fish for cage fish farming and large demand. Trout is only for cold water but has also large export demand.



Growing and preparing right feed for the different species of fish. We grow from Tilapia in cages to Trout in the large fresh water ponds from the cold rivers.

CASSAVA

The root with starch.

High yield per ha compared to other root products and absolutely essential for food security. It is a good crop for processing into various food products and snacks.



60 tons per Ha in 8 months with proper feeding and irrigation in DR Congo – Kitoko project.

Large number of jobs, higher income.

MORINGA

Complete nutrition.

Moringa should be planted in each and every household to avoid malnutrition and promote health for every individual especially for women and children.



Moringa farming is done for leaves and pods. The leaves have application for human and livestock nutrition, while the pods give Moringa oil with very good properties.

An Intercrop for all the plantation crops.

BAMBOO

Evergreen grass with multiple utility.

High yielding, releases 30% more oxygen than another tree species, used for green charcoal, green energy (gasification), furniture, construction, etc.





Bamboo can solve the twin problems of energy and deforestation. Great tool to fight the climate change.

Versatile product with multiple uses.

INDUSTRIAL HEMP

Cosmetics and energy.

Excellent crop for phyto-remediation, takes in 4 times higher CO2 than any other crop, multiple utilities from green fuel (biomass / biogas) to building material.

SAMPLE COMMERCIAL USES		
HEMP SEED	Oil	Seed / Seed Cake
		
cosmetics foods lubricants	paint resins	beer/liquor birdseed cosmetics
		gluten-free flour non-dairy milk protein powders
SAMPLE COMMERCIAL USES		
HEMP STRAW	Bast / Fibre	Shive / Hurd
		
automotive parts bio-composites canvas carpets caulking containers	geo-textiles insulation packaging paper rope/twine textiles (apparel)	animal bedding building materials fibreboards
		insulation stucco/plaster

While the stalks and leaves have multiple uses including feed, construction material, etc., the oil from its seeds is very beneficial for skin and used a lot in cosmetics.

Excellent crop rotation.

We partner with various small-scale farmers across Africa turning them into smart-scale farmers that benefit from our practical experience and passion for sustainable development.

The Agriliving Cluster Farming Model

Customised Solutions and Business Plan Development



Long-Term Processing Strategy



Customised Soil Feeding and Irrigation Strategy



Marketing Strategy



Investment Infrastructure and Support



Hands-on Training and Development

Our concept provides a model for sustainable agricultural development which include:

- Shared technical expertise
- Training and practical skills development
- Investment in infrastructure and equipment
- Continued maintenance and support

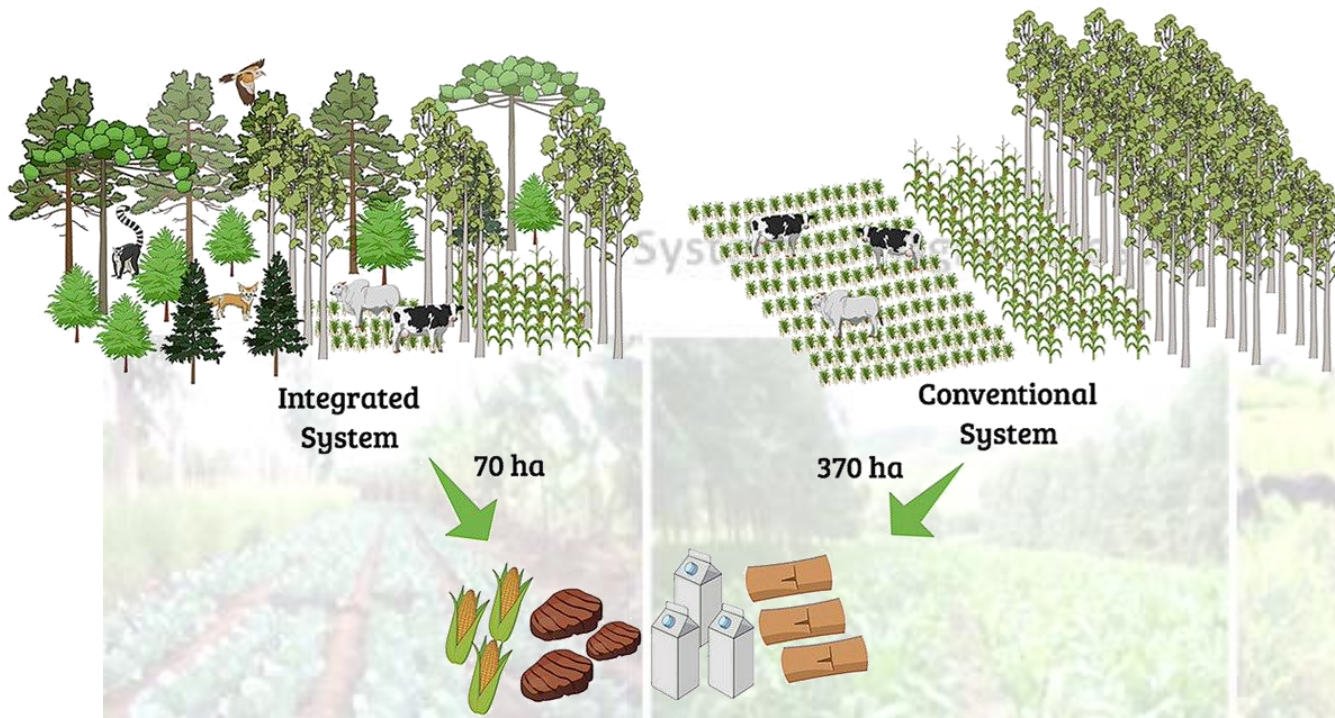
This model is built on continued support which allow all parties involved to benefit from efficient farming practices which will maximize production and increased profits.

Our unique cluster model allows these farmers to maximize profits to achieve economic independence and operational efficiencies that optimize yields which would otherwise not be possible.

These partnerships illustrate our commitment towards each project that we get involved in, ensuring a mutually beneficial interest & commitment to achieving success.

SUSTAINABLE AGROFORESTRY

- Reforestation
- Bioenergy
- Biodiversity
- Climate change mitigation
- Income
- Employment
- Food security



BAMBOO



Modern Charcoal Kiln



Green Charcoal



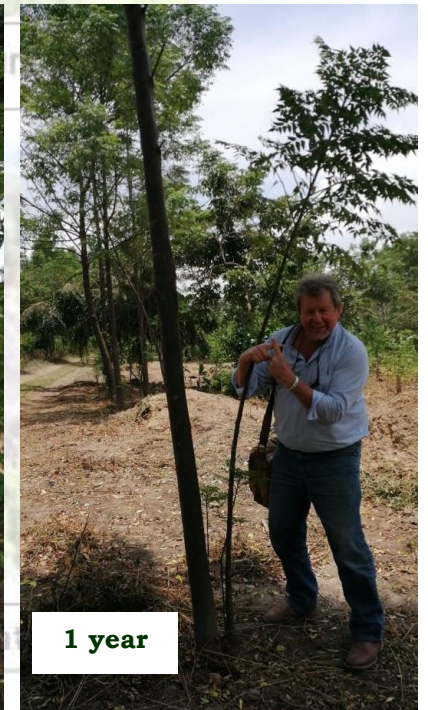
Gasifiers



Green Electricity



2 years



1 year

The performance of the agricultural sector - including forestry, fisheries, aquaculture and processing of raw materials - is dependent on the performance and knowledge of the people working in it.

Practical and Expert Training

The key to sustainability lies in dedicated "on the farm" practical training.



The potential pro-poor benefits of finding innovative ways to equip the new generation of rural young people with the knowledge, skills and means of introducing sustainable technology to their agricultural practices is enormous.

Practical in-field experiential training is key to successful sustainable agriculture models.



Lifestyle integration with Agri intervention

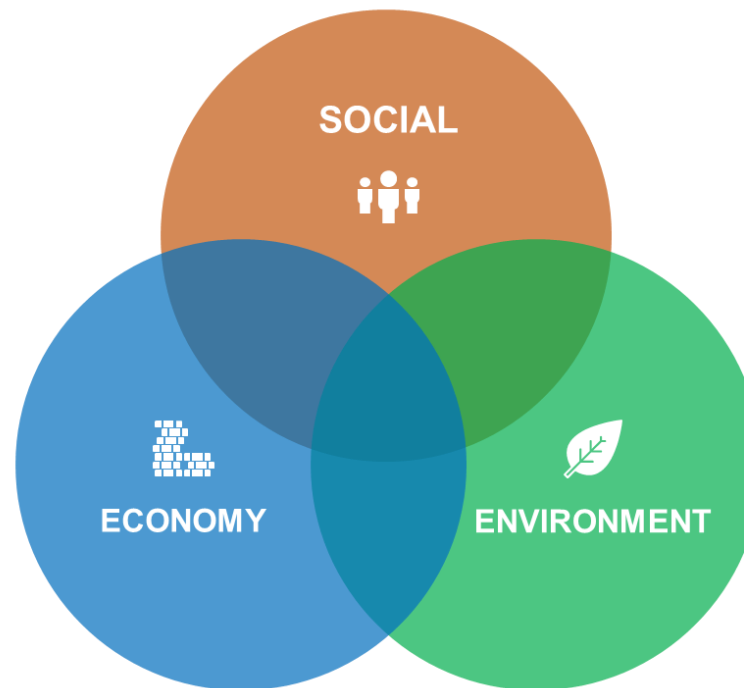
With our diverse expertise and experience ranging from agriculture, waste management, real estate development, etc. we have zeroed in on the concept of a social circular economy based on agriculture as a sustainable development model for Africa.

WHOLE DESIGN

- Find strengths, weaknesses, and leverage points in all areas
- Engage all stakeholders in designs for the future
- Identify the right scale for each solution
- Honour traditional wisdom and welcome positive innovation
- Learn from nature and practice whole systems thinking
- Build networks for mutual support.

ECONOMY

- Reconstruct the concepts of wealth, work and progress
- Work for equitable ownership of land and resources
- Cultivate social entrepreneurship to create sustainable solutions
- Empower and strengthen local economies
- Invest in fair trade and ethical systems of exchange
- Generate wellbeing for all through economic justice



SOCIAL

- Embrace diversity and build community
- Cultivate inclusive, responsive and transparent decision-making
- Empower participatory leadership and governance
- Ensure equal access to holistic education and healthcare
- Practice conflict facilitation, communication and peace building skills
- Develop fair, effective and accountable institutions

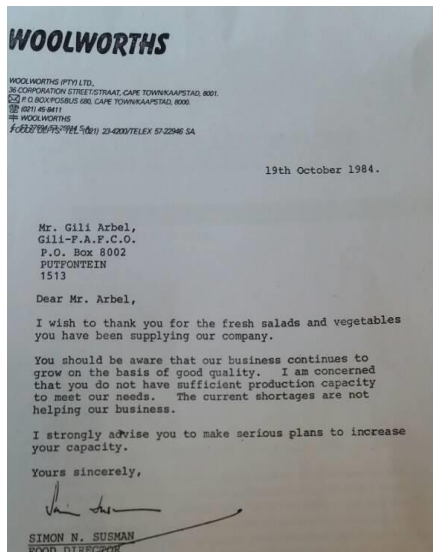
ENVIRONMENT

- Clean and replenish sources and cycles of water
- Move towards 100% renewable energies
- Grow food and soils through organic agriculture
- Innovate and spread green building technologies
- Work with waste as a valuable resource
- Increase biodiversity and regenerate ecosystems

Create an ecosystem with agriculture at the core to provide jobs, utilize resources to move towards being self-sufficient in terms of food, energy and environment within a community which provides for a better, caring and empowering life through improved livelihood opportunities, upgraded infrastructure and skill development.

TESTIMONIALS

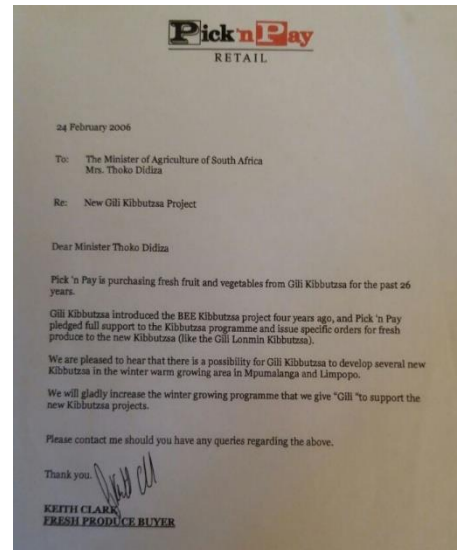
Some of the happy clients wrote to us with their appreciation.



Gili F.A.F.Co – 19th Jan 1984
WOOLWORTHS



Gili Greenworld Holdings (Pty) Ltd –
2nd July 2004
SPAR SOUTH RAND



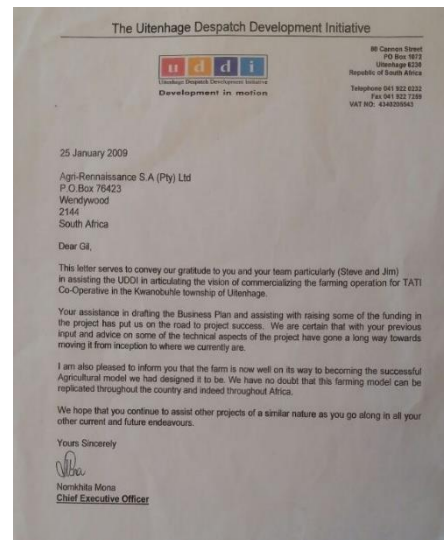
Gili Kibbutzsa – 24th Feb 2006
PICK N PAY



Gili Kibbutzsa – 10th July 2006
LONMIN PLATINUM



Gil Arbel – 13th Sept 2007
ANGLO AMERICAN



AGRI RENAISSANCE
 – 25th Jan 2009
UDDI



AgriLiving (Pty) Ltd

5 De Bloem Close, Bakkerzicht,
Somerset West 7130,
Western Cape,
SOUTH AFRICA

Contact:

Mr. Gil Arbel

gil@agriliving.co.za

+27 79 561 3589

AgriLiving (EA) Ltd

Plot 23 Kabalega Crescent, Luzira.
P. O. Box 22428, Kampala,
UGANDA

Contact:

Mr. Samuel G. L. Balagadde

agriliving@gmail.com

+256 702 406 425

AgriLiving DRC

7639 Boulevard du 30 Juin,
Gombe - Haute Tension, Kinshasa,
DR CONGO

Contact:

Mr. David Odia

agriliving@gmail.com

+243 851 096 290